

# Model 125

## Current Transformer Window Diameter 6.31"

### Application

Metering.

### Frequency

50-400 Hz.

### Insulation Level

600 Volt, 10 kV BIL full wave.

Terminal are brass studs No. 8-32 with one flatwasher, lockwasher and regular nut.

Order mounting bracket kit 0221B00231 separately.

Order bus bar mounting kit 0221A26076 separately, factory installed.

Approximate weight 3 lbs.



*Shown with Bus Bar  
Mounting Kit*

#### REGULATORY AGENCY APPROVALS

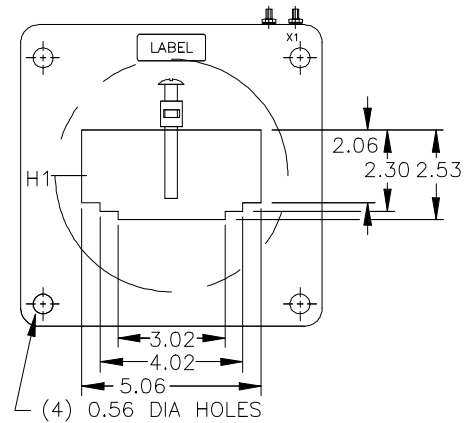
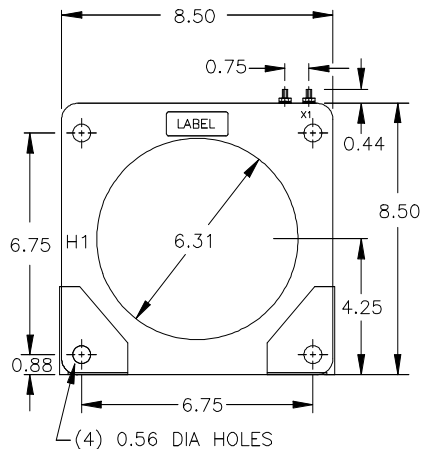
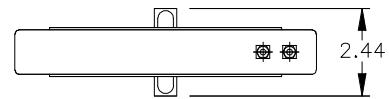
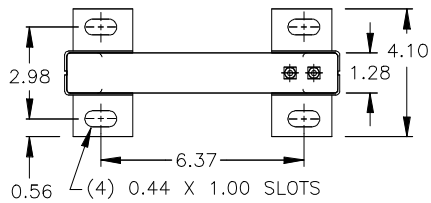
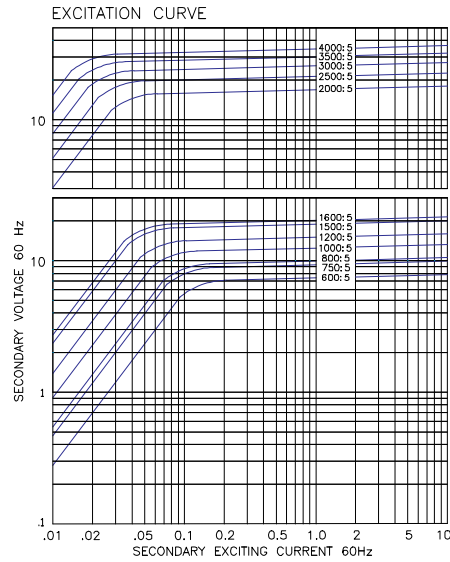


Manufactured to meet the requirements of ANSI/IEEE C57.13.  
Classified by U.L. in accordance with IEC 44-1

## Model 125

| Catalog Number | Current Ratio | ANSI Metering Class at 60 Hz |      |      |      |      | Secondary Winding Resistance ( $\Omega$ @ 75 °C) | Continuous Thermal Rating Factor |         |
|----------------|---------------|------------------------------|------|------|------|------|--|----------------------------------|---------|
|                |               | B0.1                         | B0.2 | B0.5 | B0.9 | B1.8 |  | @ 30 °C                          | @ 55 °C |
| 125-601        | 600:5         | 0.3                          | 0.3  | 1.2  | 1.2  | 2.4  | 0.071  | 1.5                              | 1.33    |
| 125-751        | 750:5         | 0.3                          | 0.3  | 0.6  | 1.2  | 2.4  | 0.143  | 1.5                              | 1.33    |
| 125-801        | 800:5         | 0.3                          | 0.3  | 0.6  | 1.2  | 2.4  | 0.116  | 1.5                              | 1.33    |
| 125-102        | 1,000:5       | 0.3                          | 0.3  | 0.3  | 0.6  | 1.2  | 0.187  | 1.5                              | 1.33    |
| 125-122        | 1,200:5       | 0.3                          | 0.3  | 0.3  | 0.6  | 1.2  | 0.224  | 1.5                              | 1.33    |
| 125-152        | 1,500:5       | 0.3                          | 0.3  | 0.3  | 0.3  | 0.6  | 0.285  | 1.5                              | 1.33    |
| 125-162        | 1,600:5       | 0.3                          | 0.3  | 0.3  | 0.3  | 0.6  | 0.304  | 1.5                              | 1.33    |
| 125-202        | 2,000:5       | 0.3                          | 0.3  | 0.3  | 0.3  | 0.6  | 0.280  | 1.5                              | 1.0     |
| 125-252        | 2,500:5       | 0.3                          | 0.3  | 0.3  | 0.3  | 0.6  | 0.351  | 1.33                             | 1.0     |
| 125-302        | 3,000:5       | 0.3                          | 0.3  | 0.3  | 0.3  | 0.6  | 0.421  | 1.33                             | 1.0     |
| 125-352        | 3,500:5       | 0.3                          | 0.3  | 0.3  | 0.3  | 0.3  | 0.491  | 1.33                             | 1.0     |
| 125-402        | 4,000:5       | 0.3                          | 0.3  | 0.3  | 0.3  | 0.3  | 0.696  | 1.0                              | 0.8     |

Approved for revenue metering by Industry Canada No. T-154



Bus Bar Kit Shown