



Switchboard Shunts

FL - 2500 to 10,000 AMPS

GENERAL INFORMATION:

Extending measurement of currents beyond available limits of self-contained DC ammeters

APPLICATIONS:

Panel meters, Switchboard, solar, rail, or other DC applications

CONTINUOUS OPERATION

Recommended that shunts are not run at more than two-thirds (2/3) the rated current under normal conditions as per IEEE standards



Model	FL
Amperes	2500 – 10,000

MODEL FL – 2500 to 10,000 AMPS
Approximate weight: 0.6 lbs.

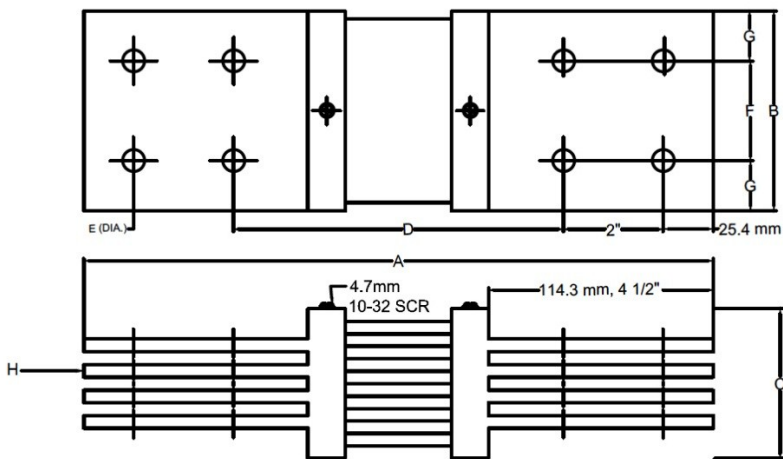
50 mV Series

CATALOG NUMBER	INPUT (AMPS)	OUTPUT (mV)	ACCURACY
FL-2500-50	2500	50	± 0.25%
FL-3000-50	3000	50	± 0.25%
FL-4000-50	4000	50	± 0.25%
FL-4500-50	4500	50	± 0.25%
FL-5000-50	5000	50	± 0.25%
FL-6000-50	6000	50	± 0.25%
FL-7000-50	7000	50	± 0.25%
FL-7500-50	7500	50	± 0.25%
FL-8000-50	8000	50	± 0.25%
FL-9000-50	9000	50	± 0.25%
FL-10000-50	10000	50	± 0.25%

100 mV Series

CATALOG NUMBER	INPUT (AMPS)	OUTPUT (mV)	ACCURACY
FL-2500-100	2500	100	± 0.25%
FL-3000-100	3000	100	± 0.25%
FL-4000-100	4000	100	± 0.25%
FL-4500-100	4500	100	± 0.25%
FL-5000-100	5000	100	± 0.25%
FL-6000-100	6000	100	± 0.25%
FL-7000-100	7000	100	± 0.25%
FL-7500-100	7500	100	± 0.25%
FL-8000-100	8000	100	± 0.25%
FL-9000-100	9000	100	± 0.25%
FL-10000-100	10000	100	± 0.25%

Tolerances ± 0.015 in (0.381 mm) for hole diameters.
Other tolerances ± 0.030 in (0.762 mm) unless otherwise noted.
Dimensions are subjects to change without notice.



50mV MODEL TYPE FL 2500 THROUGH 10,000 AMPERES

CATALOG(No.	AMP	A		B		C		D		E		F		G		H
		mm	in	mm	in	mm	in	mm	in	mm	in	mm	in	mm	in	
FL-2500-50	2500	320.68	12 5/8	101.6	4	38.1	1 1/2	168.28	6 5/8	11.11	7/16	50.8	2	25.4	1	2
FL-3000-50	3000	320.68	12 5/8	101.6	4	50.8	2	168.28	6 5/8	11.11	7/16	50.8	2	25.4	1	3
FL-4000-50	4000	320.68	12 5/8	101.6	4	76.2	3	168.28	6 5/8	11.11	7/16	50.8	2	25.4	1	4
FL-4500-50	4500	320.68	12 5/8	101.6	4	76.2	3	168.28	6 5/8	11.11	7/16	50.8	2	25.4	1	4
FL-5000-50	5000	320.68	12 5/8	101.6	4	76.2	3	168.28	6 5/8	11.11	7/16	50.8	2	25.4	1	4
FL-6000-50	6000	320.68	12 5/8	101.6	4	101.6	4	168.28	6 5/8	14.29	9/16	50.8	2	25.4	1	5
FL-7000-50	7000	320.68	12 5/8	127	5	101.6	4	168.28	6 5/8	14.29	9/16	63.5	2 1/2	31.75	1 1/4	5
FL7500-50	7500	320.68	12 5/8	127	5	101.6	4	168.28	6 5/8	14.29	9/16	63.5	2 1/2	31.75	1 1/4	6
FL-8000-50	8000	320.68	12 5/8	127	5	101.6	4	168.28	6 5/8	14.29	9/16	63.5	2 1/2	31.75	1 1/4	6
FL-9000-50	9000	320.68	12 5/8	127	5	101.6	4	168.28	6 5/8	14.29	9/16	63.5	2 1/2	31.75	1 1/4	6
FL-10000-50	10000	320.68	12 5/8	127	5	127	5	168.28	6 5/8	14.29	9/16	63.5	2 1/2	31.75	1 1/4	7

100mV MODEL TYPE FL 2500 THROUGH 10,000 AMPERES

CATALOG(No.	AMP	A		B		C		D		E		F		G		H
		mm	in	mm	in	mm	in	mm	in	mm	in	mm	in	mm	in	
FL-2500-50	2500	361.95	14 1/4	101.6	4	38.1	1 1/2	209.55	8 1/4	11.11	7/16	50.8	2	25.4	1	2
FL-3000-50	3000	361.95	14 1/4	101.6	4	50.8	2	209.55	8 1/4	11.11	7/16	50.8	2	25.4	1	3
FL-4000-50	4000	361.95	14 1/4	101.6	4	76.2	3	209.55	8 1/4	11.11	7/16	50.8	2	25.4	1	4
FL-4500-50	4500	361.95	14 1/4	101.6	4	76.2	3	209.55	8 1/4	11.11	7/16	50.8	2	25.4	1	4
FL-5000-50	5000	361.95	14 1/4	101.6	4	76.2	3	209.55	8 1/4	11.11	7/16	50.8	2	25.4	1	4
FL-6000-50	6000	361.95	14 1/4	101.6	4	101.6	4	209.55	8 1/4	14.29	9/16	50.8	2	25.4	1	5
FL-7000-50	7000	361.95	14 1/4	127	5	101.6	4	209.55	8 1/4	14.29	9/16	63.5	2 1/2	31.75	1 1/4	5
FL7500-50	7500	361.95	14 1/4	127	5	101.6	4	209.55	8 1/4	14.29	9/16	63.5	2 1/2	31.75	1 1/4	6
FL-8000-50	8000	361.95	14 1/4	127	5	101.6	4	209.55	8 1/4	14.29	9/16	63.5	2 1/2	31.75	1 1/4	6
FL-9000-50	9000	361.95	14 1/4	127	5	101.6	4	209.55	8 1/4	14.29	9/16	63.5	2 1/2	31.75	1 1/4	6
FL-10000-50	10000	361.95	14 1/4	127	5	127	5	209.55	8 1/4	14.29	9/16	63.5	2 1/2	31.75	1 1/4	7

Tolerances ± 0.015 in (0.381 mm) for hole diameters.
 Other tolerances ± 0.030 in (0.762 mm) unless otherwise noted.
 Dimensions are subjects to change without notice.