



Switchboard Shunts

FM – 1000 to 3000 AMPS

GENERAL INFORMATION:

Extending measurement of currents beyond available limits of self-contained DC ammeters

APPLICATIONS:

Panel meters, Switchboard, solar, rail, or other DC applications

CONTINUOUS OPERATION

Recommended that shunts are not run at more than two-thirds (2/3) the rated current under normal conditions as per IEEE standards



Model	FM
Amperes	1000 – 3000

MODEL FM – 1000 to 3000 AMPS

Approximate weight: 0.6 lbs.

50 mV Series

CATALOG NUMBER	INPUT (AMPS)	OUTPUT (mV)	ACCURACY
FM-1000-50	1,000	50	± 0.25%
FM-1200-50	1,200	50	± 0.25%
FM-1500-50	1,500	50	± 0.25%
FM-2000-50	2,000	50	± 0.25%
FM-2500-50	2,500	50	± 0.25%
FM-3000-50	3,000	50	± 0.25%

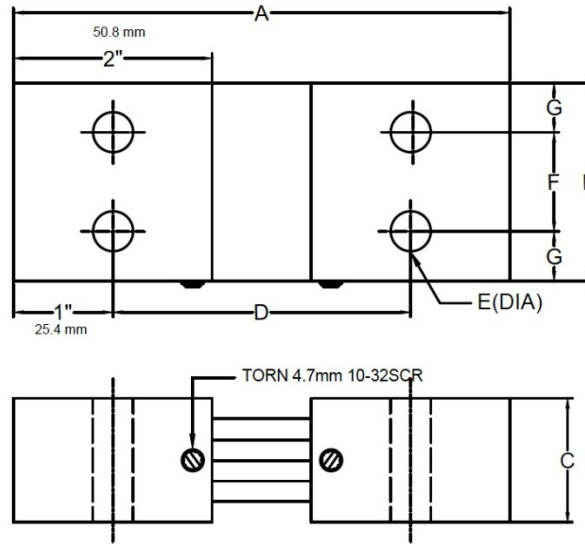
100 mV Series

CATALOG NUMBER	INPUT (AMPS)	OUTPUT (mV)	ACCURACY
FM-1000-100	1,000	100	± 0.25%
FM-1200-100	1,200	100	± 0.25%
FM-1500-100	1,500	100	± 0.25%
FM-2000-100	2,000	100	± 0.25%
FM-2500-100	2,500	100	± 0.25%
FM-3000-100	3,000	100	± 0.25%

Tolerances ± 0.015 in (0.381 mm) for hole diameters.

Other tolerances ± 0.030 in (0.762 mm) unless otherwise noted.

Dimensions are subjects to change without notice.



50mV MODEL TYPE FM 1000 THROUGH 3000 AMPERES

CATALOG# No.	AMP	A		B		C		D		E		F		G	
		mm	in	mm	in	mm	in	mm	in	mm	in	mm	in	mm	in
FL-1000-50	1000	127	5	50.8	2	31.75	1 1/4	76.2	3	10.32	13/32	25.4	1	12.7	1/2
FL-1200-50	1200	127	5	50.8	2	31.75	1 1/4	76.2	3	10.32	13/32	25.4	1	12.7	1/2
FL-1500-50	1500	123.83	4 7/8	50.8	2	31.75	1 1/4	76.2	3	10.32	13/32	25.4	1	12.7	1/2
FL-2000-50	2000	120.65	4 3/4	50.8	2	31.75	1 1/4	76.2	3	10.32	13/32	25.4	1	12.7	1/2
FL-2500-50	2500	127	5	50.8	2	31.75	1 1/4	76.2	3	10.32	13/32	25.4	1	12.7	1/2
FL-3000-50	3000	127	5	50.8	2	31.75	1 1/4	76.2	3	10.32	13/32	25.4	1	12.7	1/2

100mV MODEL TYPE FM 1000 THROUGH 3000 AMPERES

CATALOG# No.	AMP	A		B		C		D		E		F		G	
		mm	in	mm	in	mm	in	mm	in	mm	in	mm	in	mm	in
FL-1000-100	1000	127	5	50.8	2	31.75	1 1/4	76.2	3	10.32	13/32	25.4	1	12.7	1/2
FL-1200-100	1200	127	5	50.8	2	31.75	1 1/4	76.2	3	10.32	13/32	25.4	1	12.7	1/2
FL-1500-100	1500	123.83	4 7/8	50.8	2	31.75	1 1/4	76.2	3	10.32	13/32	25.4	1	12.7	1/2
FL-2000-100	2000	120.65	4 3/4	50.8	2	31.75	1 1/4	76.2	3	10.32	13/32	25.4	1	12.7	1/2
FL-2500-100	2500	127	5	50.8	2	31.75	1 1/4	76.2	3	10.32	13/32	25.4	1	12.7	1/2
FL-3000-100	3000	127	5	50.8	2	31.75	1 1/4	76.2	3	10.32	13/32	25.4	1	12.7	1/2

Tolerances ± 0.015 in (0.381 mm) for hole diameters.
 Other tolerances ± 0.030 in (0.762 mm) unless otherwise noted.
 Dimensions are subjects to change without notice.