



## Switchboard Shunts

**FQ – 300 to 1000 AMPS**

### GENERAL INFORMATION:

Extending measurement of currents beyond available limits of self-contained DC ammeters

### APPLICATIONS:

Panel meters, Switchboard, solar, rail, or other DC applications

### CONTINUOUS OPERATION

Recommended that shunts are not run at more than two-thirds (2/3) the rated current under normal conditions as per IEEE standards



<b>Model</b>	<b>FQ</b>
<b>Amperes</b>	300 – 1000

### MODEL FQ – 300 to 1000 AMPS

Approximate weight: 0.6 lbs.

#### 50 mV Series

CATALOG NUMBER	INPUT (AMPS)	OUTPUT (mV)	ACCURACY
FQ-300-50	300	50	± 0.25%
FQ-400-50	400	50	± 0.25%
FQ-500-50	500	50	± 0.25%
FQ-600-50	600	50	± 0.25%
FQ-750-50	750	50	± 0.25%
FQ-800-50	800	50	± 0.25%
FQ-1000-50	1,000	50	± 0.25%

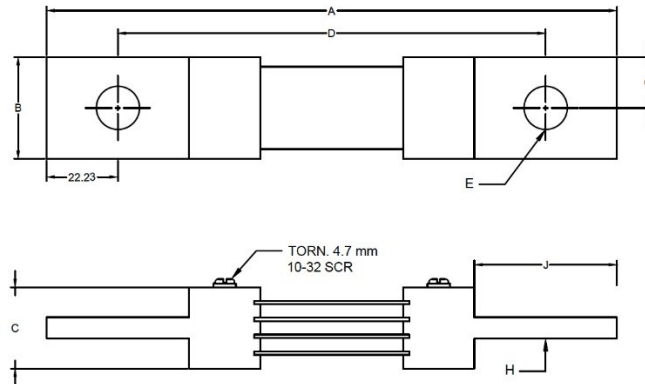
#### 100 mV Series

CATALOG NUMBER	INPUT (AMPS)	OUTPUT (mV)	ACCURACY
FQ-120-100	120	100	± 0.25%
FQ-130-100	130	100	± 0.25%
FQ-150-100	150	100	± 0.25%
FQ-200-100	200	100	± 0.25%
FQ-250-100	250	100	± 0.25%
FQ-300-100	300	100	± 0.25%
FQ-400-100	400	100	± 0.25%
FQ-500-100	500	100	± 0.25%

Tolerances ± 0.015 in (0.381 mm) for hole diameters.

Other tolerances ± 0.030 in (0.762 mm) unless otherwise noted.

Dimensions are subjects to change without notice.



### 50m MODEL TYPE FQ 300 THROUGH 1000 AMPERES

CATALOG# No.	AMP	A		B		C		D		E		G		J	
		mm	in	mm	in	mm	in	mm	in	mm	in	mm	in	mm	in
FQ-300-50	300	177.8	7	31.75	1 1/4	25.4	1	133.35	5 1/4	13.49	17/32	15.88	5/8	44.45	1 3/4
FQ-400-50	400	177.8	7	31.75	1 1/4	25.4	1	133.35	5 1/4	13.49	17/32	15.88	5/8	44.45	1 3/4
FQ-500-50	500	177.8	7	31.75	1 1/4	25.4	1	133.35	5 1/4	13.49	17/32	15.88	5/8	44.45	1 3/4
FQ-600-50	600	177.8	7	38.1	1 1/2	25.4	1	133.35	5 1/4	13.49	17/32	19.05	3/4	44.45	1 3/4
FQ-750-50	750	177.8	7	50.8	2	25.4	1	133.35	5 1/4	16.67	21/32	25.4	1	44.45	1 3/4
FQ-800-50	800	177.8	7	50.8	2	25.4	1	133.35	5 1/4	16.67	21/32	25.4	1	44.45	1 3/4
FQ-1000-50	1000	177.8	7	63.5	2 1/2	25.4	1	133.35	5 1/4	16.67	21/32	31.75	1 1/4	44.45	1 3/4

### 100m MODEL TYPE FQ 120 THROUGH 500 AMPERES

CATALOG# No.	AMP	A		B		C		D		E		G		J	
		mm	in	mm	in	mm	in	mm	in	mm	in	mm	in	mm	in
FQ-120-100	120	190.5	7 1/2	38.1	1 1/2	25.4	1	146.05	5 3/4	13.49	17/32	15.88	5/8	44.45	1 3/4
FQ-130-100	130	190.5	7 1/2	38.1	1 1/2	25.4	1	146.05	5 3/4	13.49	17/32	15.88	5/8	44.45	1 3/4
FQ-150-100	150	190.5	7 1/2	38.1	1 1/2	25.4	1	146.05	5 3/4	13.49	17/32	15.88	5/8	44.45	1 3/4
FQ-200-100	200	190.5	7 1/2	38.1	1 1/2	25.4	1	146.05	5 3/4	13.49	17/32	19.05	3/4	44.45	1 3/4
FQ-250-100	250	190.5	7 1/2	50.8	2	25.4	1	146.05	5 3/4	13.49	17/32	19.05	3/4	44.45	1 3/4
FQ-300-100	300	190.5	7 1/2	50.8	2	25.4	1	146.05	5 3/4	16.67	21/32	25.4	1	44.45	1 3/4
FQ-400-100	400	190.5	7 1/2	50.8	2	25.4	1	146.05	5 3/4	16.67	21/32	25.4	1	44.45	1 3/4
FQ-500-100	500	190.5	7 1/2	63.5	2 1/2	25.4	1	146.05	5 3/4	16.67	21/32	31.75	1 1/4	44.45	1 3/4

Tolerances  $\pm 0.015$  in (0.381 mm) for hole diameters.

Other tolerances  $\pm 0.030$  in (0.762 mm) unless otherwise noted.

Dimensions are subjects to change without notice.