



Lightweight Shunts

TM (B) - 170 to 600

GENERAL INFORMATION:

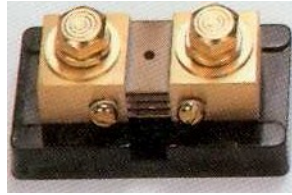
Extending measurement of currents beyond available limits of self-contained DC ammeters

APPLICATIONS:

Solar generators Wind power Heavy industry Electroplating Battery chargers Mining

CONTINUOUS OPERATION

Recommended that shunts are not run at more than two-thirds (2/3) the rated current under normal conditions as per IEEE standards



Model	TM (B)
Amperes	170 - 600

MODEL TM – 170 to 600 AMPS

Approximate weight: 0.6 lbs.

50 mV Series

CATALOG NUMBER	INPUT (AMPS)	OUTPUT (mV)	ACCURACY
TM-170-50	170	50	± 0.25%
TM-200-50	200	50	± 0.25%
TM-250-50	250	50	± 0.25%
TM-300-50	300	50	± 0.25%
TM-400-50	400	50	± 0.25%
TM-450-50	450	50	± 0.25%
TM-500-50	500	50	± 0.25%
TM-600-50	600	50	± 0.25%

100 mV Series

CATALOG NUMBER	INPUT (AMPS)	OUTPUT (mV)	ACCURACY
TM-170-100	170	100	± 0.25%
TM-200-100	200	100	± 0.25%
TM-250-100	250	100	± 0.25%
TM-300-100	300	100	± 0.25%
TM-400-100	400	100	± 0.25%
TM-450-100	450	100	± 0.25%
TM-500-100	500	100	± 0.25%
TM-600-100	600	100	± 0.25%

Tolerances ± 0.015 in (0.381 mm) for hole diameters.

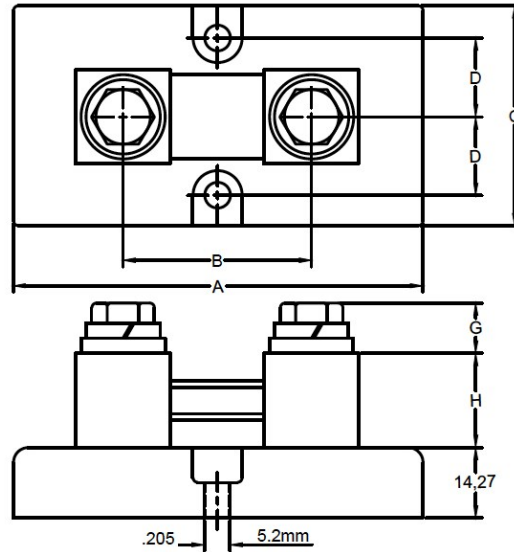
Other tolerances ± 0.030 in (0.762 mm) unless otherwise noted.

Dimensions are subjects to change without notice.



Lightweight Shunts

TM (B) - 170 to 600



50mV MODEL TYPE TM 170 THROUGH 600 AMPERES

CATALOG No.	AMP	A		B		C		D		F		H		J	
		mm	in	mm	in	mm	in	mm	in	mm	in	mm	in	mm	in
TM-170-50	170	82.55	3 1/4	38.1	1 1/2	44.45	1 3/4	15.88	.625	44.45	1 3/4	19.05	3/4	9.53-16 x 15.88	3/8-16 x 5/8
TM-200-50	200	82.55	3 1/4	38.1	1 1/2	44.45	1 3/4	15.88	.625	44.45	1 3/4	19.05	3/4	9.53-16 x 15.88	3/8-16 x 5/8
TM-250-50	250	82.55	3 1/4	38.1	1 1/2	44.45	1 3/4	15.88	.625	44.45	1 3/4	19.05	3/4	9.53-16 x 15.88	3/8-16 x 5/8
TM-300-50	300	82.55	3 1/4	38.1	1 1/2	44.45	1 3/4	15.88	.625	44.45	1 3/4	19.05	3/4	9.53-16 x 15.88	3/8-16 x 5/8
TM-400-50	400	82.55	3 1/4	38.1	1 1/2	44.45	1 3/4	15.88	.625	44.45	1 3/4	19.05	3/4	9.53-16 x 15.88	3/8-16 x 5/8
TM-450-50	450	82.55	3 1/4	38.1	1 1/2	44.45	1 3/4	15.88	.625	44.45	1 3/4	19.05	3/4	9.53-16 x 15.88	3/8-16 x 5/8
TM-500-50	500	82.55	3 1/4	38.1	1 1/2	44.45	1 3/4	15.88	.625	44.45	1 3/4	19.05	3/4	9.53-16 x 15.88	3/8-16 x 5/8
TM-600-50	600	82.55	3 1/4	38.1	1 1/2	44.45	1 3/4	15.88	.625	44.45	1 3/4	19.05	3/4	9.53-16 x 15.88	3/8-16 x 5/8

100mV MODEL TYPE TM 170 THROUGH 600 AMPERES

CATALOG No.	AMP	A		B		C		D		F		H		J	
		mm	in	mm	in	mm	in	mm	in	mm	in	mm	in	mm	in
TM-170-100	170	82.55	3 1/4	38.1	1 1/2	44.45	1 3/4	15.88	.625	44.45	1 3/4	19.05	3/4	9.53-16 x 15.88	3/8-16 x 5/8
TM-200-100	200	82.55	3 1/4	38.1	1 1/2	44.45	1 3/4	15.88	.625	44.45	1 3/4	19.05	3/4	9.53-16 x 15.88	3/8-16 x 5/8
TM-250-100	250	82.55	3 1/4	38.1	1 1/2	44.45	1 3/4	15.88	.625	44.45	1 3/4	19.05	3/4	9.53-16 x 15.88	3/8-16 x 5/8
TM-300-100	300	82.55	3 1/4	38.1	1 1/2	44.45	1 3/4	15.88	.625	44.45	1 3/4	19.05	3/4	9.53-16 x 15.88	3/8-16 x 5/8
TM-400-100	400	82.55	3 1/4	38.1	1 1/2	44.45	1 3/4	15.88	.625	44.45	1 3/4	19.05	3/4	9.53-16 x 15.88	3/8-16 x 5/8
TM-450-100	450	82.55	3 1/4	38.1	1 1/2	44.45	1 3/4	15.88	.625	44.45	1 3/4	19.05	3/4	9.53-16 x 15.88	3/8-16 x 5/8
TM-500-100	500	82.55	3 1/4	38.1	1 1/2	44.45	1 3/4	15.88	.625	44.45	1 3/4	19.05	3/4	9.53-16 x 15.88	3/8-16 x 5/8
TM-600-100	600	82.55	3 1/4	38.1	1 1/2	44.45	1 3/4	15.88	.625	44.45	1 3/4	19.05	3/4	9.53-16 x 15.88	3/8-16 x 5/8

Tolerances ± 0.015 in (0.381 mm) for hole diameters.
 Other tolerances ± 0.030 in (0.762 mm) unless otherwise noted.
 Dimensions are subjects to change without notice.