

SAXON SERIES PANEL INDICATORS



Features

- Two compact case sizes
- Withstands high levels of shock, vibration, dirt and humidity
- Pivot and jewel mechanisms

Benefits

- Complies with ANSI C39.1 (IEC 51)
- IP54 (NEMA 3) protection
- Instruments comply with BS EN61010-1 and meet IEC414 (BS5458)
- Pass dielectric test (2600V for 1min)

Applications

- Switchgear
- Distribution systems
- Generator sets
- Control panels
- Energy management
- Building management
- Utility power monitoring
- Process control
- Motor control

Compliant with

CSA File No. 242615
cRUus File No. E203000

Connections

See page 30

A versatile range of 2.5" or 3.5" surface mount panel meters utilizing pivot and jewel mechanisms and offering IP54 protection. The range includes iron vane and moving coil AC and DC ammeters and voltmeters and frequency meters designed to perform in demanding environments.

Specifications - Frequency Meters

Accuracy:	0.15 = 60Hz, 1.25 = 400Hz, 0.15 = 50Hz, 0.25 = 55Hz
Voltage:	110/130V, 200/250V
Frequency:	50Hz or 60Hz
Burden:	4VA Maximum

Specifications - Moving Iron AC Ammeter and Voltmeter

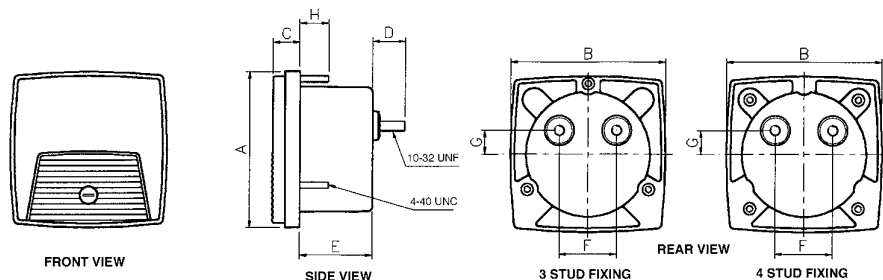
Accuracy:	±2%
Rating:	Ammeters: 1 - 30A Voltmeters: 10V - 600V
Overload:	Ammeters: x1.2 for 2 hours, x10 for 5 seconds Voltmeters: x1.2 for 2 hours, x2 for 5 seconds
Burden:	Ammeters: 0.5VA Voltmeters: 4.5VA maximum

Specifications - Moving Coil DC Ammeter and Voltmeter

Accuracy:	±2%
Rating:	Ammeters: 1 - 30A Voltmeters: 10V - 600V
Operating temperature:	-20°C to +60°C (-4°F to +140°F)
Storage temperature:	-30°C to +70°C (-22°F to +158°F)

Dimensions

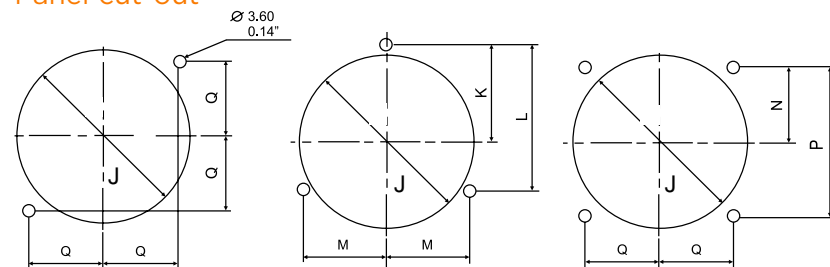
Specify number of fixing studs when ordering 2½" and 3½" meters.



	A	B	C	D	E	F	G	H	J	K	L	M	N	P	Q
2½ mm	68.6	68.6	11.8	14.6	32.0	25.4	10.4	12.7	55.9	31.0	46.5	26.9	23.9	47.8	23.9
inch	2.70	2.70	0.46	0.57	1.26	1.00	0.41	0.50	2.20	1.22	1.83	1.06	0.94	1.88	0.94
3½ mm	88.9	88.9	11.8	14.6	36.0	25.4	10.4	12.7	69.9	40.2	60.3	34.8	28.5	57.0	28.5
inch	3.5	3.5	0.46	0.57	1.42	1.00	0.41	0.50	2.75	1.58	2.37	1.37	1.12	2.24	1.12

Code J= Diameter Cut-Out

Panel cut-out



**Product Codes - AC Ammeter True RMS Reading
(Accuracy ±2% ES)**

Rating	Scaling	Cat. no.
5A	0-5A	(01*)-75AA-LSLS-C7-B*
10A	0-10A	(01*)-75AA-MTMT-C7-B*
15A	0-15A	(01*)-75AA-NDND-C7-B*
20A	0-20A	(01*)-75AA-NGNG-C7-B*
30A	0-30A	(01*)-75AA-NLNL-C7-B*
5A	Transformer rated	(01*)-75AA-LS**-C7-B*

** SEE ATTACHED FOR PART NUMBERS

**Product Codes - AC Voltmeter True RMS Reading
(Accuracy ±2% ES)**

150V	0-150V	(01*)-75VA-PZPZ-C7-B*
300V	0-300V	(01*)-75VA-RXRXC7-B*
600V	0-600V	(01*)-75VA-SJSJ-C7-B*
150V	Transformer rated	(01*)-75VA-PZ**-C7-B*

** SEE ATTACHED FOR PART NUMBERS

Product Codes - DC Ammeter (Accuracy ±2% ES)

0-1mA	To suit requirements	(01*)-01AA-FA**-B*
0-5mA	0-5mA	(01*)-01AA-FXFX-B*
0-10mA	0-10mA	(01*)-01AA-GZGZ-B*
0-20mA	0-20mA	(01*)-01AA-HFHF-B*
0-50mA	0-50mA	(01*)-01AA-HYHY-B*
0-100mA	0-100mA	(01*)-01AA-JRJR-B*
0-200mA	0-200mA	(01*)-01AA-KAKA-B*
0-500mA	0-500mA	(01*)-01AA-KMKM-B*
0-1A0-1A	(01*)-01AA-LALA-B*	
0-2A0-2A	(01*)-01AA-LELE-B*	
0-5A0-5A	(01*)-01AA-LSLS-B*	
0-10A	0-10A	(01*)-01AA-MTMT-B*
0-50mV	To suit	(01*)-01AA-EC**-B*

** SEE ATTACHED FOR PART NUMBERS

**Product Codes - Milliammeters Suppressed Zero
(Accuracy ±2% ES)**

4-20mA	To suit requirements	(01*)-01RA-HG**-B*
		**Specify scale value

**Product Codes - DC Voltmeters Sensitivity 1000Ω/Volt
(Accuracy ±2% ES)**

0-15V	0-15V	(01*)-01VA-NDND-B*
0-30V	0-30V	(01*)-01VA-NLNL-B*
0-50V	0-50V	(01*)-01VA-NTNT-B*
0-150V	0-150V	(01*)-01VA-PZPZ-B*
0-300V	0-300V	(01*)-01VA-RXRXB*
0-600V	0-600V	(01*)-01VA-SJSJB*

Product Codes - Frequency Meters 120V, Self Contained

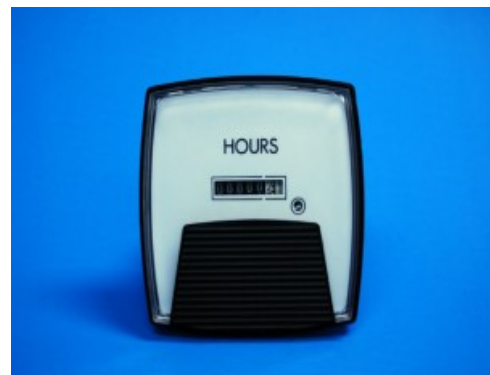
50Hz	45-55Hz	(01*)-41SA-PNAG-AG-B*
55Hz	45-65Hz	(01*)-41SA-PNAJ-AJ-B*
60Hz	55-65Hz	(01*)-41SA-PNAN-AN-B*

**Product Codes - Elapsed Time Meters 99999.99 hours,
non-resettable**

110/130V, 50Hz	-	(01*)-155A-PNZH-C5-B*
200/250V, 50Hz	-	(01*)-155A-RNZH-C5-B*
480V, 50Hz	-	(01*)-155A-SEZH-C5-B*
110/130V, 60Hz	-	(01*)-156A-PNZH-C6-B*
200/250V, 60Hz	-	(01*)-156A-RNZH-C6-B*
480V, 60Hz	-	(01*)-156A-SEZH-C6-B*

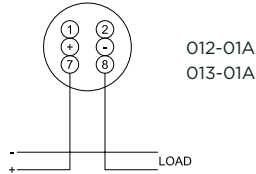
To denote the required case size, replace the 01* in the catalogue number with 012, 013 for 2 1/2", 3 1/2" respectively.

To denote the required stud fixing configuration, replace B* with B2 (2 stud), B3 (3 stud) or B4 (4 stud). B3= 3 Stud is Standard

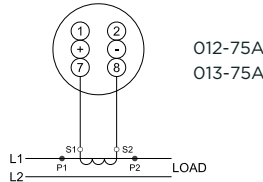


Connections

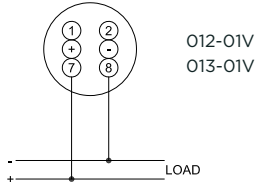
AMMETER DC
Direct connected (max rating 30A)



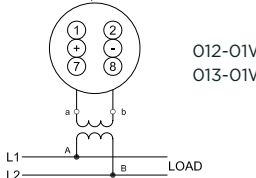
AMMETER AC 012-01B
 013-01B



VOLTMETER DC
Direct connected (max rating 800V)



**VOLTMETER AC/
FREQUENCY METER** 012-75V 012-415
 013-75V 013-415
V.T. operated



Product Codes - AC Voltmeter True RMS Reading

150 V Transformer rated (01*)-75VA-PZ**-C7-B3
 *= 2 for 2.5 inch or 3 for 3.5 inch
 C7= 50/60 Hz
 B3= 3 stud mounting standard

INPUT	SCALE	PART NUMBER	
		2.5 INCH	3.5 INCH
150 V	150 V	012-75VA-PZPZ-C7-B3	013-75VA-PZPZ-C7-B3
150 V	300 V	012-75VA-PZRX-C7-B3	013-75VA-PZRX-C7-B3
150 V	600 V	012-75VA-PZSJ-C7-B3	013-75VA-PZSJ-C7-B3
150 V	750 V	012-75VA-PZSM-C7-B3	013-75VA-PZSM-C7-B3
150 V	3000 V	012-75VA-PZUA-C7-B3	013-75VA-PZUA-C7-B3
150 V	5250 V	012-75VA-PZUL-C7-B3	013-75VA-PZUL-C7-B3
150 V	9000 V	012-75VA-PZUY-C7-B3	013-75VA-PZUY-C7-B3
150 V	18000 V	012-75VA-PZWD-C7-B3	013-75VA-PZWD-C7-B3

Product Codes - DC Ammeter

50 mV DC To Suite (01*)-01AA-EC**-B3
 *= 2 for 2.5 inch or 3 for 3.5 inch
 B3= 3 stud mounting standard

INPUT	SCALE	PART NUMBER	
		2.5 INCH	3.5 INCH
50 mV DC	1 A	012-01AA-ECLA-B3	013-01AA-ECLA-B3
50 mV DC	2 A	012-01AA-ECLE-B3	013-01AA-ECLE-B3
50 mV DC	3 A	012-01AA-ECLJ-B3	013-01AA-ECLJ-B3
50 mV DC	5 A	012-01AA-ECLS-B3	013-01AA-ECLS-B3
50 mV DC	10 A	012-01AA-ECMT-B3	013-01AA-ECMT-B3
50 mV DC	15 A	012-01AA-ECND-B3	013-01AA-ECND-B3
50 mV DC	20 A	012-01AA-ECNG-B3	013-01AA-ECNG-B3
50 mV DC	25 A	012-01AA-ECNJ-B3	013-01AA-ECNJ-B3
50 mV DC	30 A	012-01AA-ECNL-B3	013-01AA-ECNL-B3
50 mV DC	40 A	012-01AA-ECNP-B3	013-01AA-ECNP-B3
50 mV DC	50 A	012-01AA-ECNT-B3	013-01AA-ECNT-B3
50 mV DC	60 A	012-01AA-ECNW-B3	013-01AA-ECNW-B3
50 mV DC	75 A	012-01AA-ECPB-B3	013-01AA-ECPB-B3

50 mV DC	80 A	012-01AA-ECPD-B3	013-01AA-ECPD-B3
50 mV DC	100 A	012-01AA-ECPK-B3	013-01AA-ECPK-B3
50 mV DC	150 A	012-01AA-ECPZ-B3	013-01AA-ECPZ-B3
50 mV DC	200 A	012-01AA-ECRL-B3	013-01AA-ECRL-B3
50 mV DC	250 A	012-01AA-ECRS-B3	013-01AA-ECRS-B3
50 mV DC	300 A	012-01AA-ECRX-B3	013-01AA-ECRX-B3
50 mV DC	400 A	012-01AA-ECSC-B3	013-01AA-ECSC-B3
50 mV DC	500 A	012-01AA-ECSF-B3	013-01AA-ECSF-B3
50 mV DC	600 A	012-01AA-ECSJ-B3	013-01AA-ECSJ-B3
50 mV DC	750 A	012-01AA-ECSM-B3	013-01AA-ECSM-B3
50 mV DC	800 A	012-01AA-ECSN-B3	013-01AA-ECSN-B3
50 mV DC	1000 A	012-01AA-ECSS-B3	013-01AA-ECSS-B3
50 mV DC	1200 A	012-01AA-ECSU-B3	013-01AA-ECSU-B3
50 mV DC	1500 A	012-01AA-ECTC-B3	013-01AA-ECTC-B3
50 mV DC	2000 A	012-01AA-ECTM-B3	013-01AA-ECTM-B3
50 mV DC	2500 A	012-01AA-ECTU-B3	013-01AA-ECTU-B3
