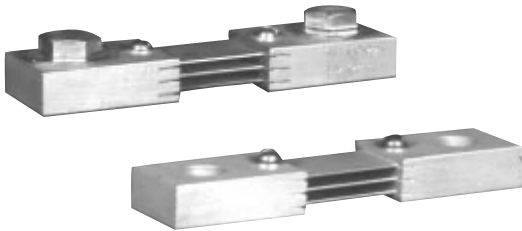


# DC Ammeter Shunts

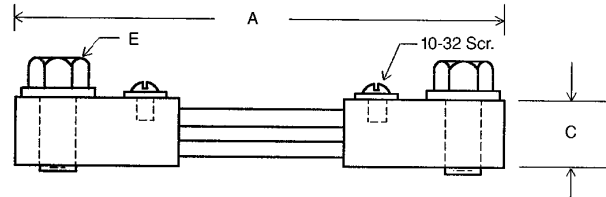
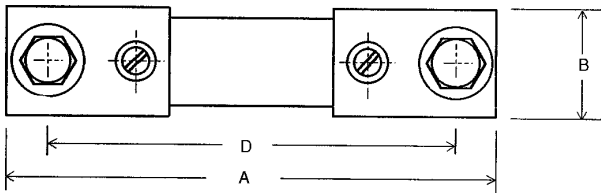
STD Accuracy  $\pm 0.25\%$

## TYPE F: 100 through 600 Amperes



### TYPE F: 50 mV

Catalog Number	AMP	A	B	C	D	E
F-100-50	100	4.50	1	0.50	3.50	3/8-16 $\times$ 3/4
F-150-50	150	4.50	1	0.50	3.50	3/8-16 $\times$ 3/4
F-200-50	200	4.50	1	0.50	3.50	3/8-16 $\times$ 3/4
F-250-50	250	5.37	1.37	0.75	4.00	1/2-13 $\times$ 1
F-300-50	300	5.37	1.37	0.75	4.00	1/2-13 $\times$ 1
F-400-50	400	5.37	1.37	0.75	4.00	1/2-13 $\times$ 1
F-500-50	500	5.50	1.50	1	4.00	1/2-13 $\times$ 1 1/4
F-600-50	600	5.50	1.50	1	4.00	1/2-13 $\times$ 1 1/4



Tolerances  $\pm .015$  for the hole diameters. Other tolerances  $\pm .030$  unless specified.  
Dimensions subject to change without notice.



Crompton Technology Inc.  
7536 Bath Road  
Mississauga, Ontario L4T 1L2  
T (905)671-2304  
F (905)671-3661  
info@cromptoncanada.com  
www.cromptoncanada.com