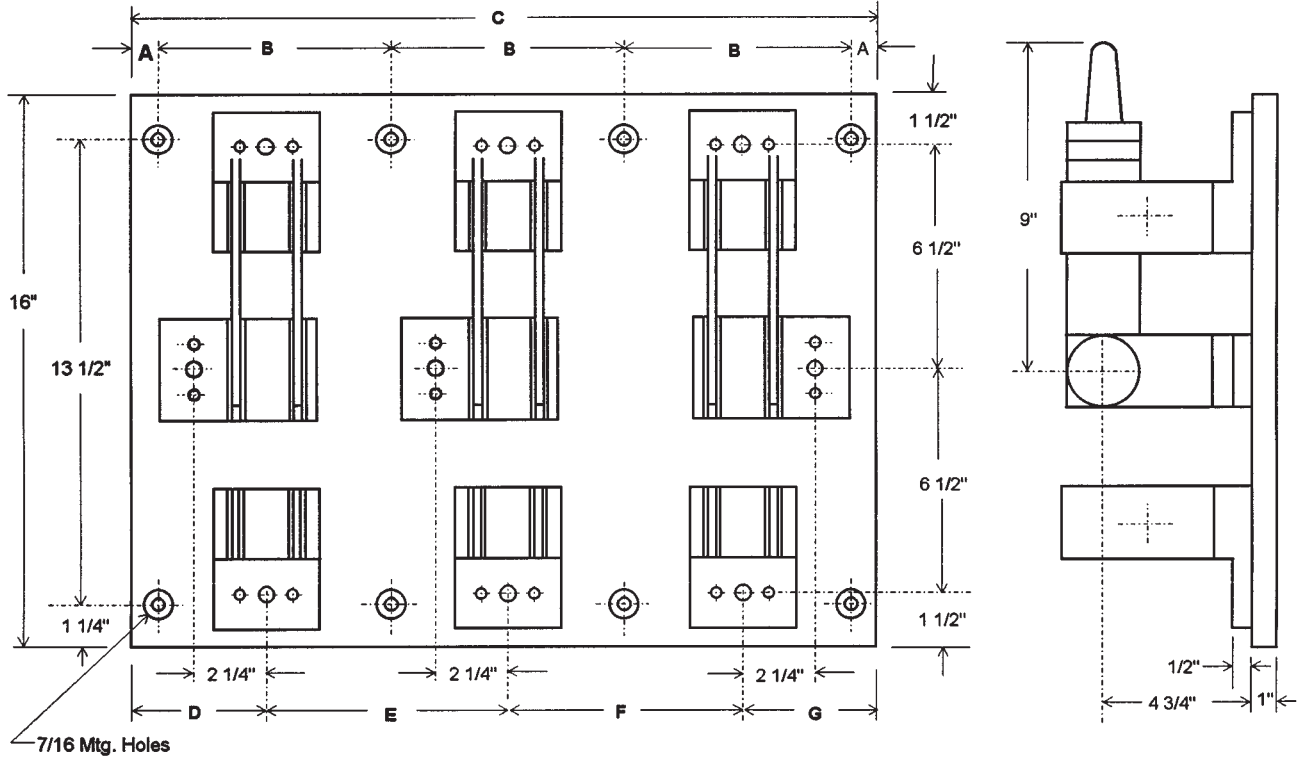


# Knife Switches

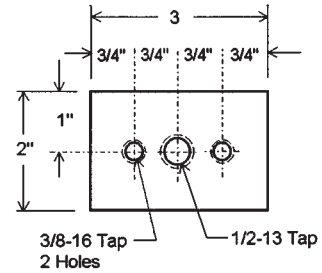
## TYPE A - Double Throw - Front Connected: 1200 Amp

Shown as Basic Switch. For options, download Info/Opt.pdf



NOTE: Parts silver plated, insulation red polyglass

Customer Connection



### 1200 AMP — 600 VDC / VAC OR LESS

POLES	A	B	C	D	E	F	G	No. of Mtg. Holes
Single	3/4	5 1/2	7	3 1/2	—	—	—	4
Two	3/4	5 1/2	12 1/2	—	—	5 1/2	3 1/2	6
Three	3/4	6 1/2	21	3 3/4	7 1/4	5 1/2	4 1/2	8

**Crompton**  
TECHNOLOGY

Crompton Technology Inc.  
7536 Bath Road  
Mississauga, Ontario L4T 1L2  
T (905)671-2304  
F (905)671-3661  
info@cromptoncanada.com  
www.cromptoncanada.com

Tolerances ± .015 for the hole diameters. Other tolerances ± .030 unless specified.  
Dimensions subject to change without notice.