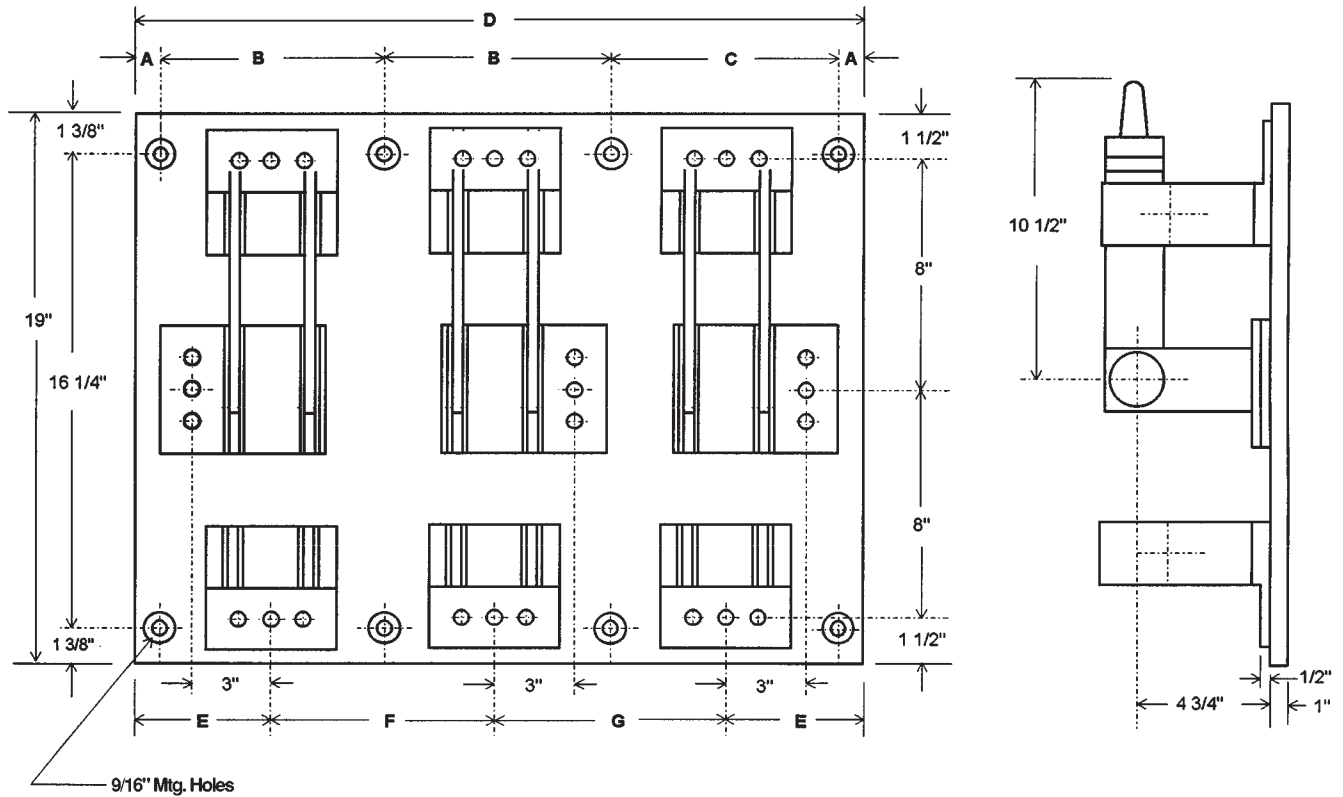


# Knife Switches

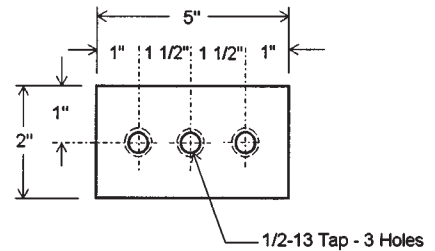
## TYPE A - Double Throw - Front Connected: 1600 Amp

Shown as Basic Switch. For options, download Info/Opt.pdf



NOTE: Parts silver plated, insulation red polyglass

Customer Connection



### 1600 AMP — 600 VDC / VAC OR LESS

POLES	A	B	C	D	E	F	G	No. of Mtg. Holes
Single	$\frac{5}{8}$	$7\frac{3}{4}$	—	9	$4\frac{1}{2}$	—	—	4
Two	$\frac{3}{4}$	8	—	$17\frac{1}{2}$	$4\frac{3}{4}$	8	—	6
Three	$\frac{3}{4}$	8	$8\frac{1}{2}$	26	$4\frac{3}{4}$	8	$8\frac{1}{2}$	8

Tolerances  $\pm .015$  for the hole diameters. Other tolerances  $\pm .030$  unless specified. Dimensions subject to change without notice.



Crompton Technology Inc.  
 7536 Bath Road  
 Mississauga, Ontario L4T 1L2  
 T (905)671-2304  
 F (905)671-3661  
 info@cromptoncanada.com  
 www.cromptoncanada.com