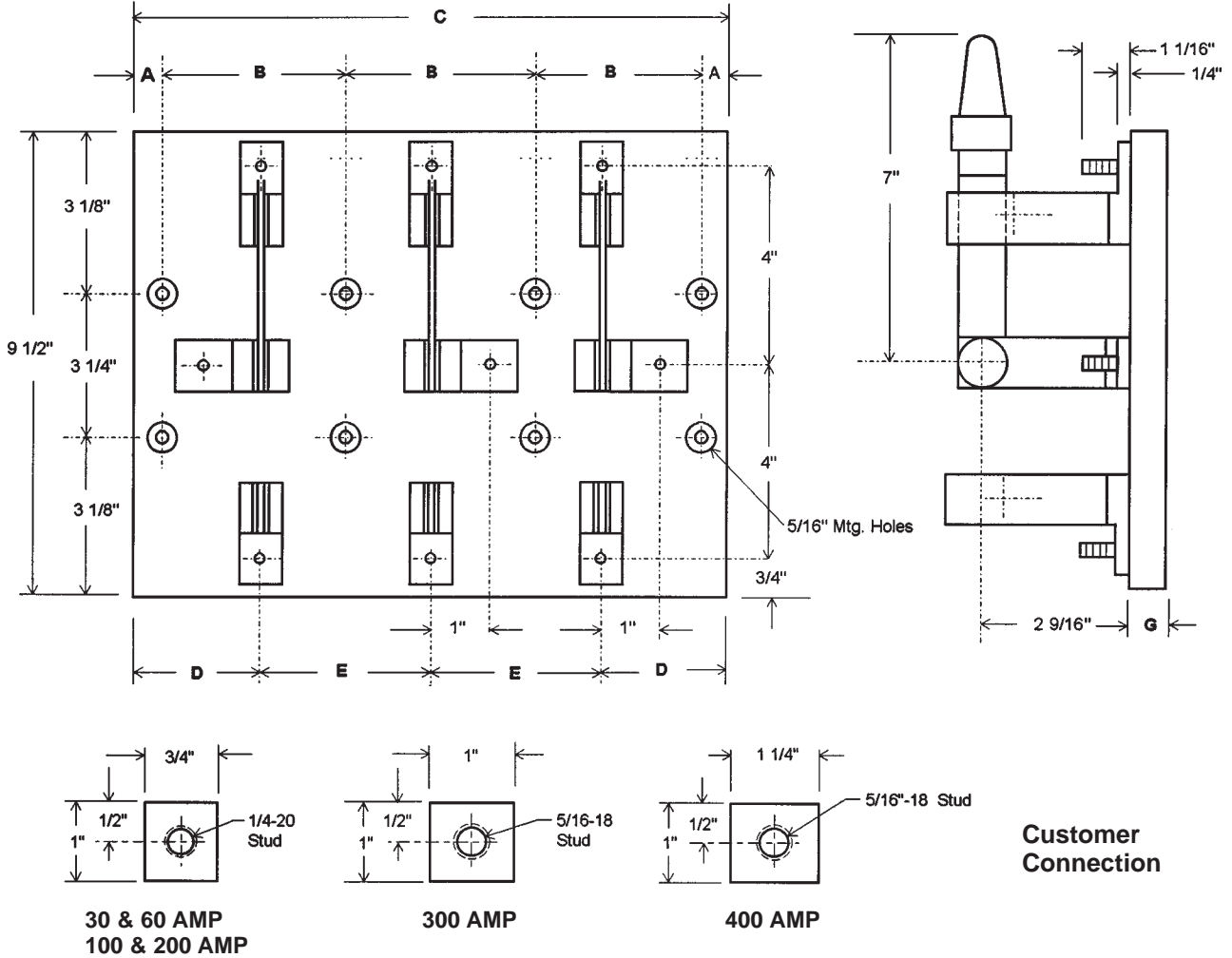


Knife Switches

TYPE A - Double Throw - Front Connected: 30, 60, 100, 200, 300 and 400 Amp

Shown as Basic Switch. For options, download Info/Opt.pdf



NOTE: 100 to 400 Amp – Parts silver plated, insulation red polyglass

30, 60, 100, 200, 300 and 400 AMP — 250 VDC / 500 VAC

600 VDC / VAC

POLES	A	B	C	D	E	G	No. of Mtg. Holes
Single	5/8	3 1/2	4 3/4	2 3/8	—	3/4	4
Two	5/8	3 1/2	8 1/4	2 7/8	2 1/2	3/4	6
Three	5/8	3 1/2	11 3/4	2 3/8	3 1/2	3/4	8

G
1
1
1



Crompton Technology Inc.
7536 Bath Road
Mississauga, Ontario L4T 1L2
T (905)671-2304
F (905)671-3661
info@cromptoncanada.com
www.cromptoncanada.com

Tolerances ± .015 for the hole diameters. Other tolerances ± .030 unless specified. Dimensions subject to change without notice.