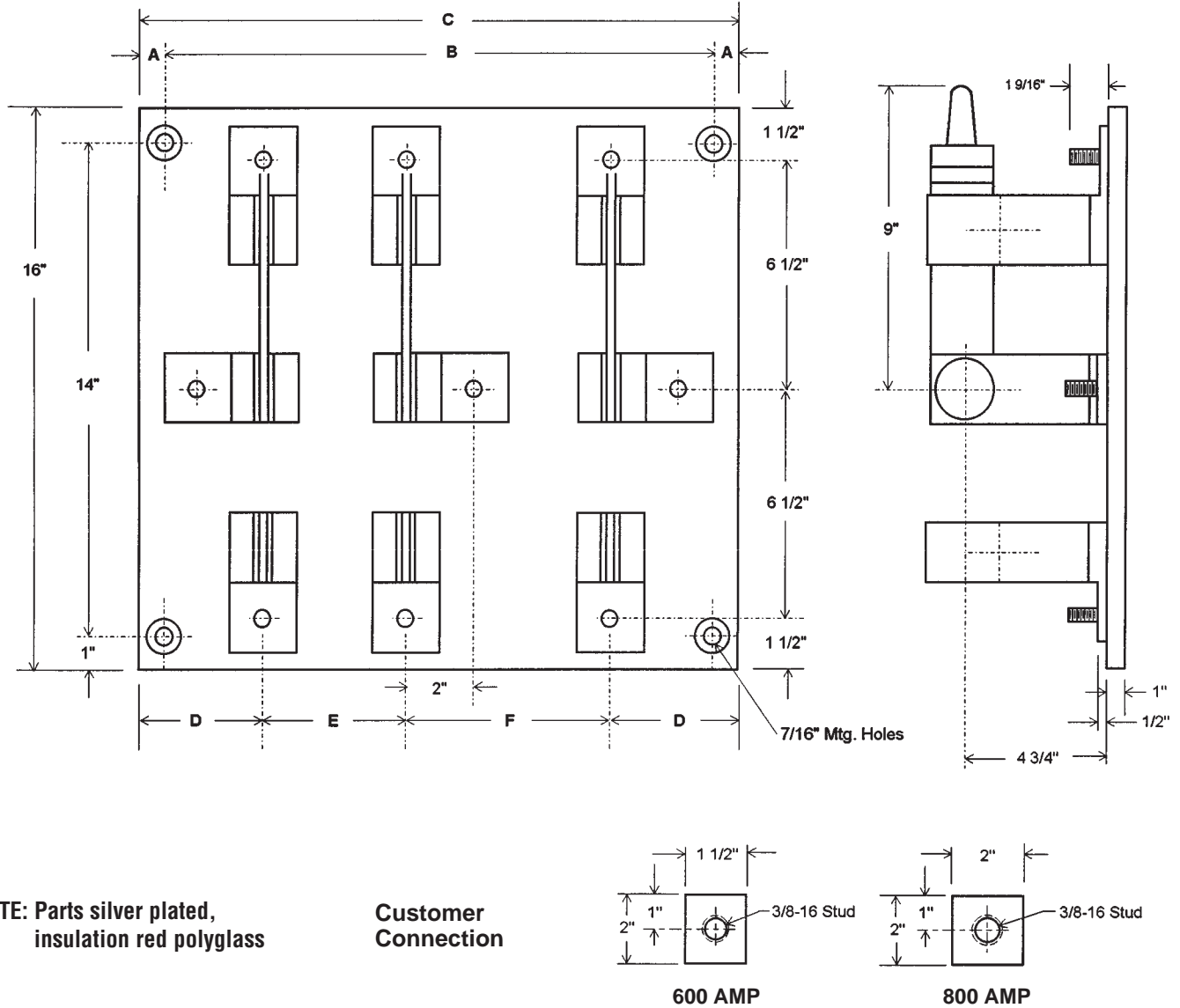


# Knife Switches

## TYPE A - Double Throw - Front Connected: 600 and 800 Amp

Shown as Basic Switch. For options, download Info/Opt.pdf



### 600 and 800 AMP — 600 VDC / VAC OR LESS

POLES	A	B	C	D	E	F	No. of Mtg. Holes
Single	3/4	6 1/4	7 3/4	3 3/8	—	—	4
Two	3/4	10	11 1/2	3 3/4	4	—	4
Three	3/4	16	17 1/2	3 3/4	4	6	4

Tolerances ± .015 for the hole diameters. Other tolerances ± .030 unless specified. Dimensions subject to change without notice.



Crompton Technology Inc.  
7536 Bath Road  
Mississauga, Ontario L4T 1L2  
T (905)671-2304  
F (905)671-3661  
info@cromptoncanada.com  
www.cromptoncanada.com