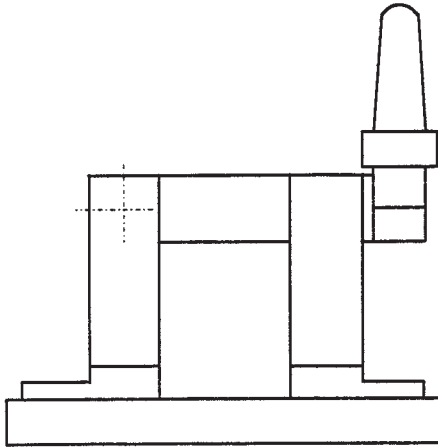
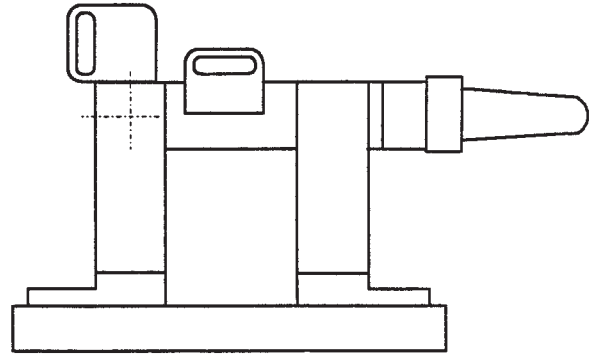




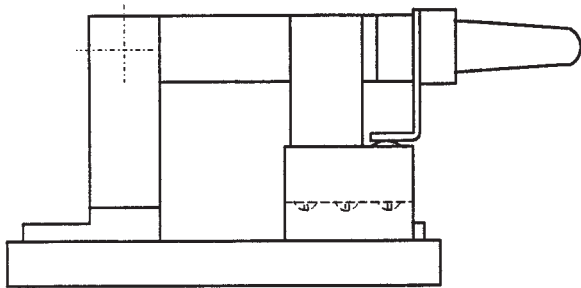
Knife Switch Options



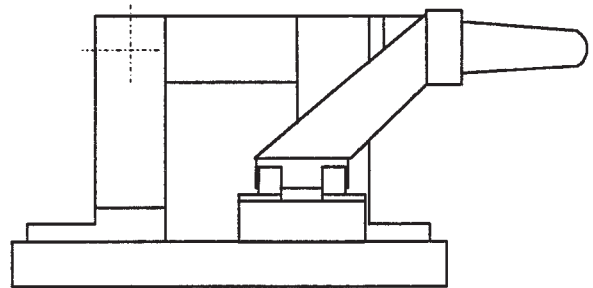
Handle on Front



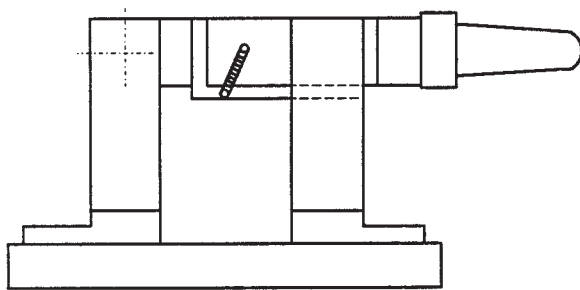
Padlock Attachment and 90° Stop



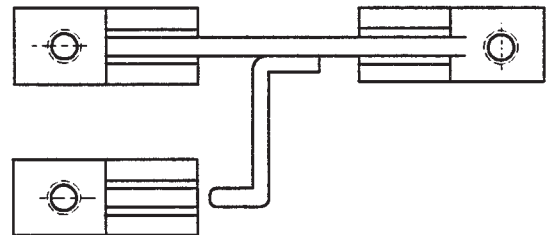
Micro Type Auxillary Switch
base will be extended 1.25" per switch



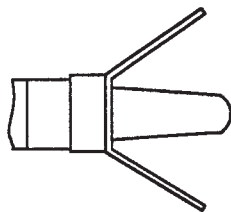
Knife Type Auxillary Switch
base will be extended 1.25" per switch



Flipper Blade (Field Discharge)



Field Discharge Pole
base will be extended 1.25" per switch



Hand Guard

Tolerances $\pm .015"$ for the hole diameters. Other tolerances $\pm .030"$ unless specified. Dimensions subject to change without notice.



Crompton Technology Inc.
7536 Bath Road
Mississauga, Ontario L4T 1L2
T (905)671-2304
F (905)671-3661
info@cromptoncanada.com
www.cromptoncanada.com