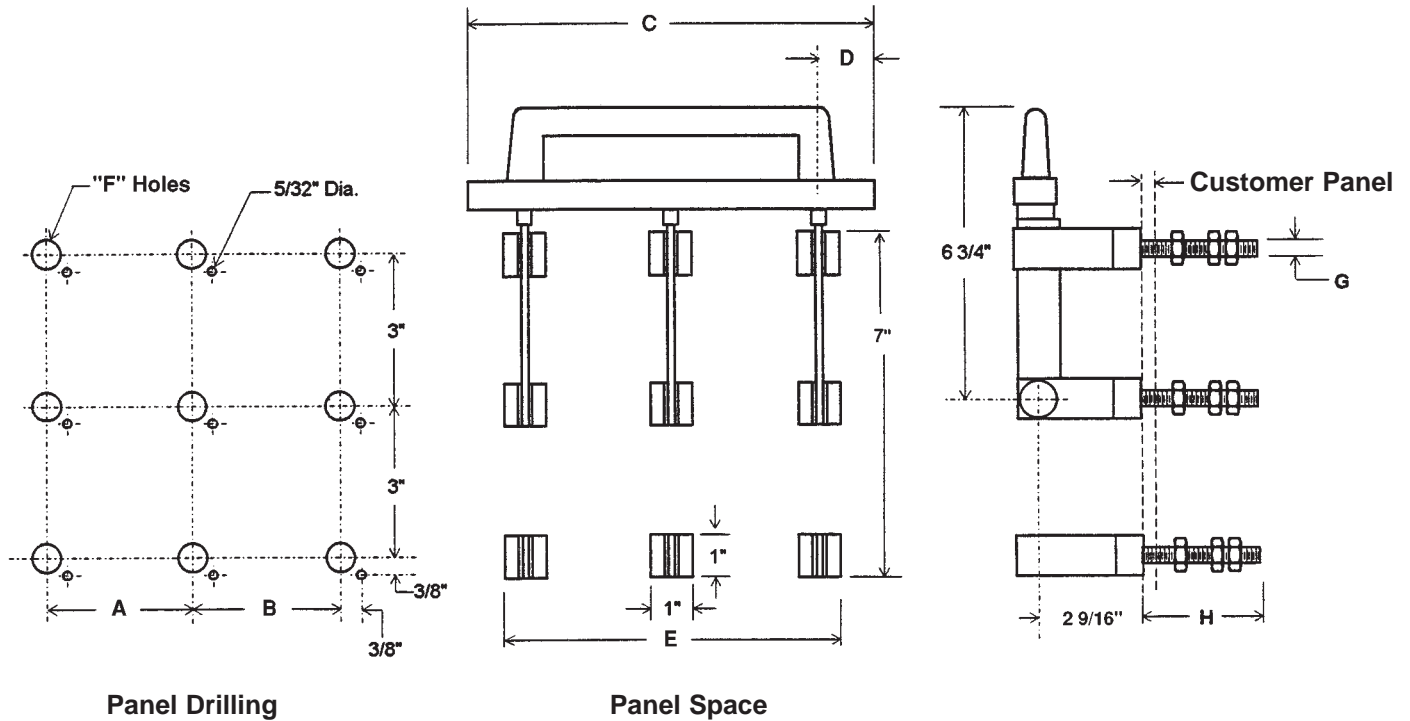


# Knife Switches

## TYPE B - Double Throw - Back Connected: 100, 200, 300 and 400 Amp

Shown as Basic Switch. For options, download Info/Opt.pdf



NOTE: Parts silver plated, insulation red polyglass

### 100, 200, 300 and 400 AMP — 600 VDC / VAC OR LESS

POLES	A	B	C	D	E	100 and 200 AMP			300 AMP			400 AMP		
						F	G	H	F	G	H	F	G	H
Single	—	—	5/4	2 5/8	1	1/2	7/16-14	3	9/16	1/2-13	3	1 1/16	5/8-11	3 1/2
Two	2 1/2	—	5/4	1 3/8	3 1/2	1/2	7/16-14	3	9/16	1/2-13	3	1 1/16	5/8-11	3 1/2
Three	2 1/2	2 1/2	5/4	1 1/8	6	1/2	7/16-14	3	9/16	1/2-13	3	1 1/16	5/8-11	3 1/2

Tolerances ± .015 for the hole diameters. Other tolerances ± .030 unless specified. Dimensions subject to change without notice.



Crompton Technology Inc.  
 7536 Bath Road  
 Mississauga, Ontario L4T 1L2  
 T (905)671-2304  
 F (905)671-3661  
 info@cromptoncanada.com  
 www.cromptoncanada.com