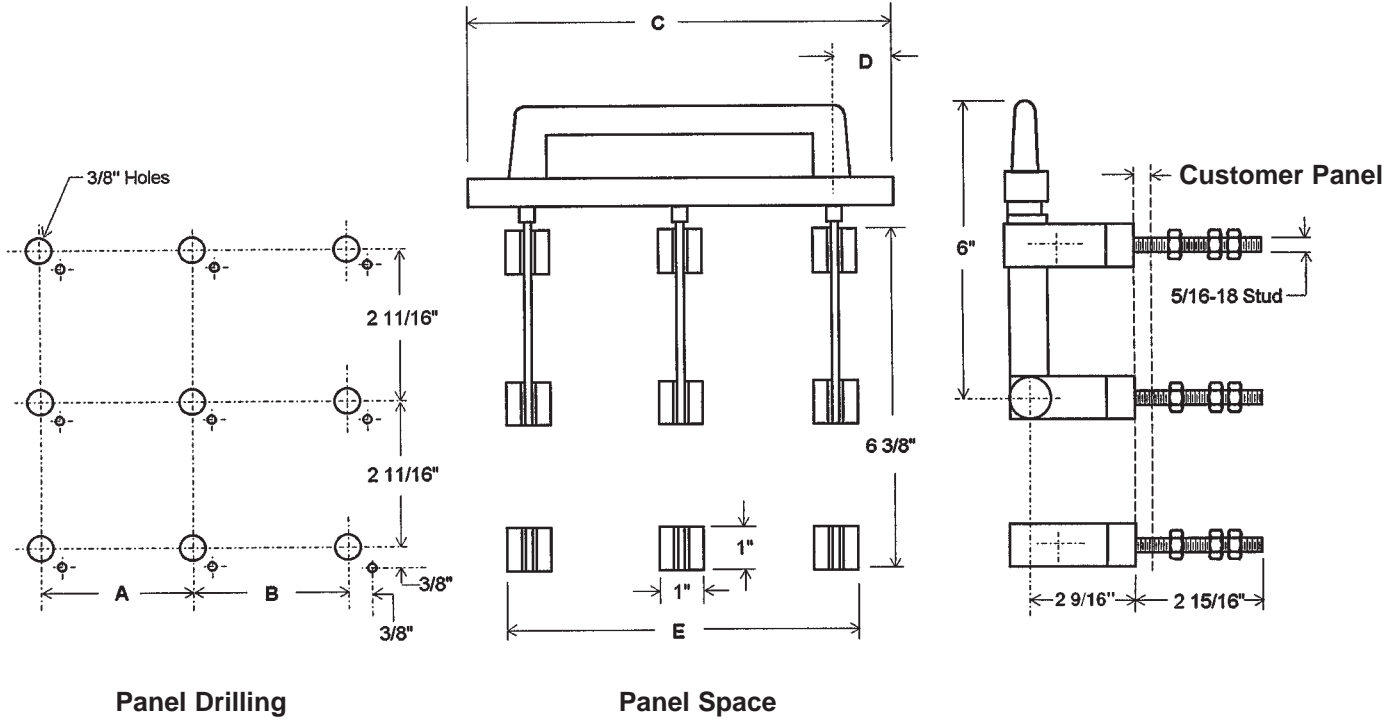


Knife Switches

TYPE B - Double Throw - Back Connected: 30 and 60 Amp

Shown as Basic Switch. For options, download Info/Opt.pdf



NOTE: Parts bright dipped, insulation red polyglass

30 and 60 AMP — 600 VDC / VAC OR LESS

POLES	A	B	C	D	E
Single	—	—	5/4	1 11/16	1
Two	2 7/8	—	5/4	1 3/16	3 7/8
Three	2 7/8	2 7/8	5/4	—	6 3/4



Crompton Technology Inc.
 7536 Bath Road
 Mississauga, Ontario L4T 1L2
 T (905)671-2304
 F (905)671-3661
 info@cromptoncanada.com
 www.cromptoncanada.com

Tolerances ± .015 for the hole diameters. Other tolerances ± .030 unless specified.
 Dimensions subject to change without notice.