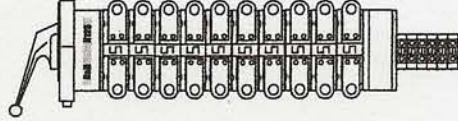


## VOLTAGE CHANGE SWITCH OPTIONS:

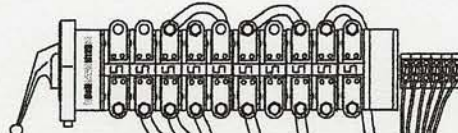
### 1. OPEN SWITCH

Switch is supplied with bolt type lugs for attachment of cables. Several mountings available, including padlock and push to turn.



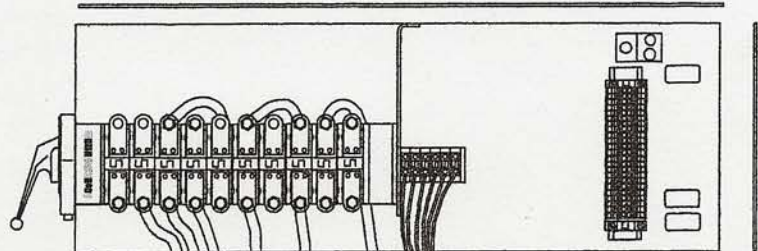
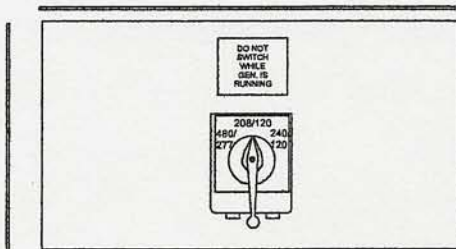
### 2. CABLED SWITCH

Switch is supplied with 6 foot long power and control lead wires, securely attached to the switch with heavy duty ring type terminals, and clearly labeled.



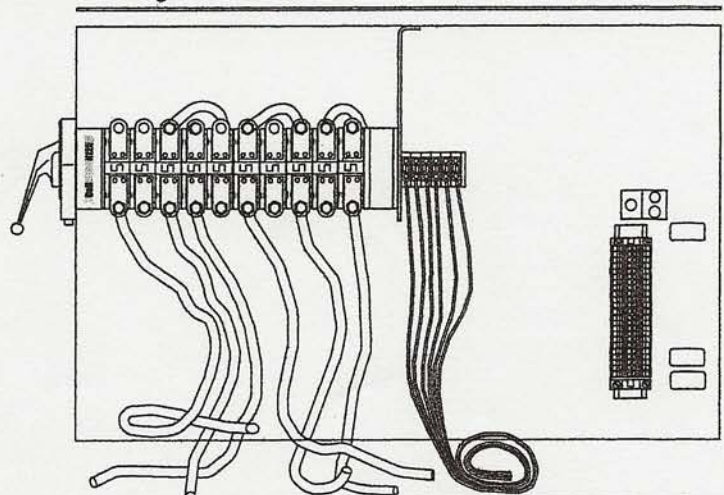
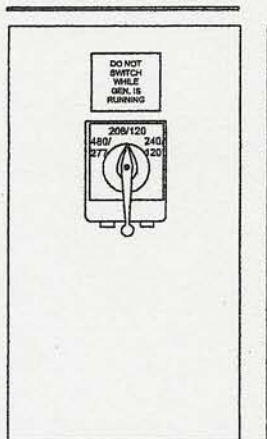
### 3. ENCLOSED AND CABLED SWITCH

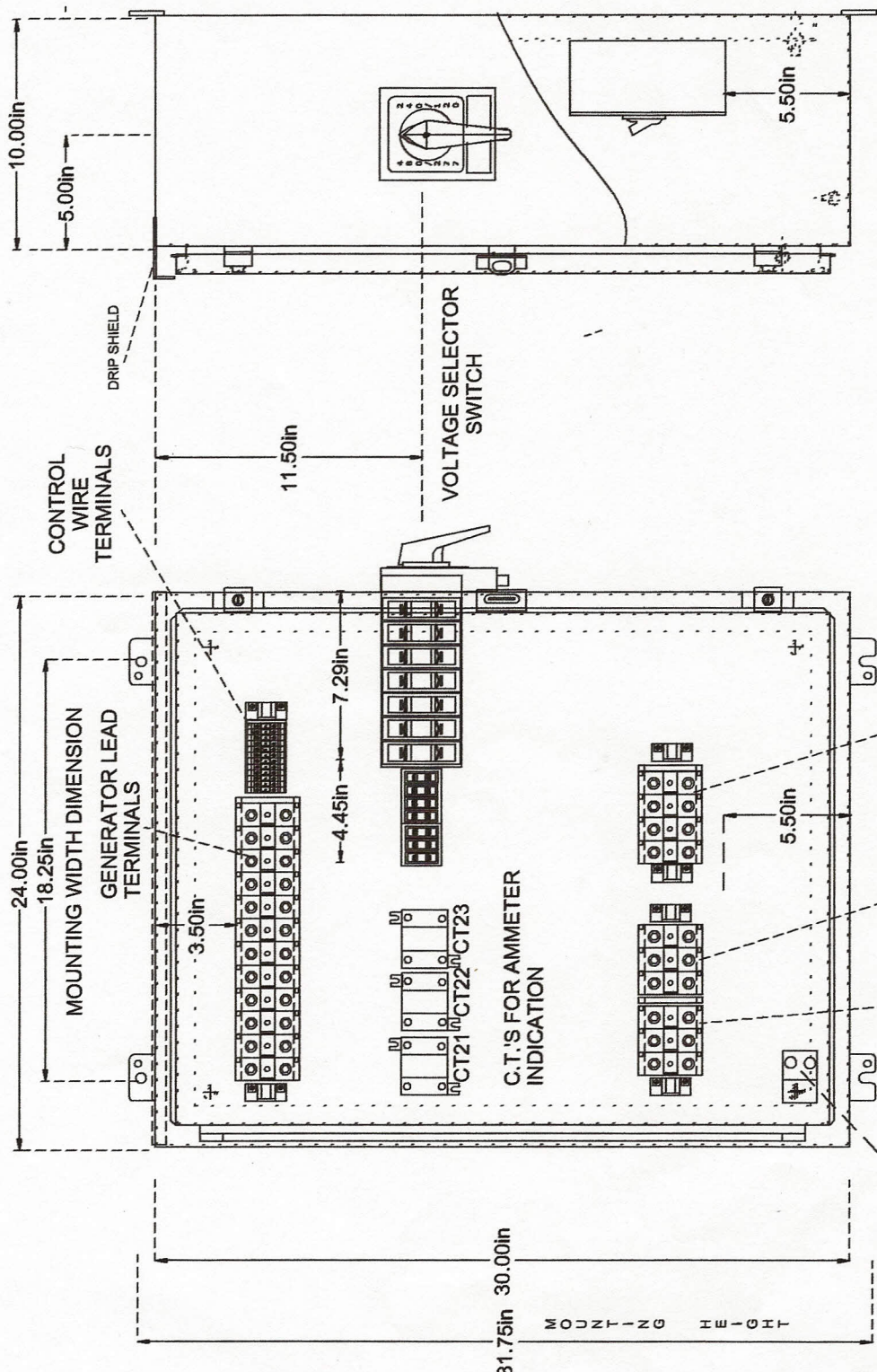
Switch is enclosed in Nema 1 can with removable top, sides and back, and supplied with 6 foot long power and control lead wires, securely attached to the switch with heavy duty ring type terminals, and clearly labeled.



Switch can be mounted either horizontally or vertically to best fit in generator housing.

Also available is the "total package" enclosed in Nema 3R cans with output breakers and terminal strips for attachment to outside of generator.





DESCRIPTION	ENCLOSED VOLTAGE CHANGE SYSTEM	
DRAWING NO:	06/16/05	VCS606N3R2P2B:0302-00
DRAWN BY: MFN	PART NUMBER VCS606N3R2P20 45-60 KW VOLTAGE CHANGE SYSTEM	
DIMENSIONAL FOR 30x24x10 NEMA 3R ENCLOSED VCS UNIT		