



Setup and Operating Instructions

Integra INT-2270 Integra INT-2170

The power to analyse quality – with a touch.

The Integra, INT-2270 and Integra INT-2170, are a multifunction digital meter for the measurement of power quality. They provide measurement isolation and conversion of all main electrical parameters. Both INT-2270 and INT-2170 can be used in single and three-phase balanced or unbalanced, 3 or 4 wire electrical systems.

The INT-2270 has an accuracy of CL0.2S.

The INT-2170 has an accuracy of CL0.5S.

Both include RS485 Modbus RTU communications protocol and Pulse/Alarm input/outputs as standard.

Installation

Refer to the Installation Instructions. 3K84305 for further information.

Setup

The Integra, INT-2270 meter, is individually calibrated to full accuracy on shipment from the manufacturing location. To setup the system parameters follow the instructions below.

1. Press and hold the top button for 5 seconds.



2. This will enter the setup mode.



Warnings ⚡ ⚠ Caution: Risk of Electric Shock

- During normal operation, voltages hazardous to life may be present at some of the terminals of this unit.
- At voltages below that specified in the Range of Use the meter may shut down. However, voltages hazardous to life may still be present at some of the terminals of this unit.
- Installation and servicing should be performed only by qualified, properly trained personnel abiding by local regulations.
- Ensure all supplies are de-energised before attempting connection or other procedures.
- Terminals should not be user accessible after installation and external installation provisions must be sufficient to prevent hazards under fault conditions.
- This unit is not intended to function as part of a system providing the sole means of fault protection - good engineering practice dictates that any critical function be protected by at least two independent and diverse means.
- The unit does not have internal fuses therefore external fuses must be used for protection and safety under fault conditions.
- Never open-circuit the secondary winding of an energized current transformer.
- This product should only be operated with the CT secondary connections earthed.
- If this equipment is used in a manner not specified by the manufacturer, protection provided by the equipment may be impaired.

3. Enter the password. Factory default is no password. To set a password use the ↑ and ↓ buttons to enter a four (4) digit number. It is essential that this number is remember to be able to access the setup screens in future.



4. Select the system type Use the ↑ and ↓ buttons to select the required system type.



5. Select the VT Primary menu and enter the required value using the ↑ and ↓ buttons.

The value can be entered as V, kV, MV or GV. Press enter to store the value for the Primary VT.



6. Select the VT Secondary from the menu and enter the appropriate value.



7. Select the CT Primary menu and enter the required value using the ↑ and ↓ buttons. The value can be entered as A, kA, MA or GA. Press enter to store the value for the Primary CT.



8. Select the CT Secondary menu and select 5 or 1 Amp.



The basic functions of the meter are now complete. There are many other features available within the product all are setup from the menu structure.

1. Before exiting the setup screens there is a prompt.



There are many other functions and features within the product. These are all setup using the menus within the

Operation

1. Power Saving Display

After 30 seconds of no touch the display backlight will reduce by 50% to save power.



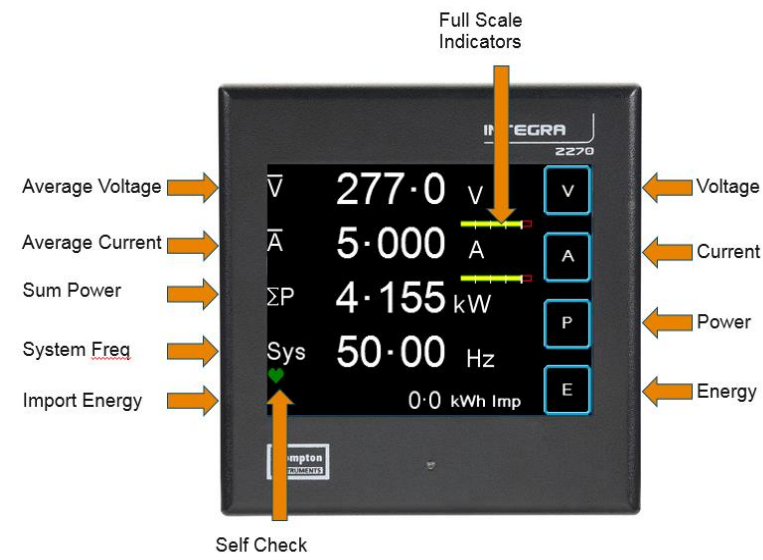
After 10 minutes of no touch the display will go into standby mode.

Touching the display cancels the energy saving features.



Normal Operation

1. The Display Explained.



2. User Defined Screen.

User defined screen is denoted by the Crompton Instruments logo in the bottom corner of the display.



Each of the 5 lines on the display can be defined under the 'User Screen' option in the Setup menu.

Once setup, the user defined screen will be displayed on power up.

Explanation of Symbols

- Refer to manual
- Danger of electric shock
- Do not discard

While TE has made every reasonable effort to ensure the accuracy of the information in this catalogue, TE does not guarantee that it is error-free, nor does TE make any other representation, warranty or guarantee that the information is accurate, correct, reliable or current. TE reserves the right to make any adjustments to the information contained herein at any time without notice. TE expressly disclaims all implied warranties regarding the information contained herein, including, but not limited to, any implied warranties of merchantability or fitness for a particular purpose. The dimensions in this catalogue are for reference purposes only and are subject to change without notice. Specifications are subject to change without notice. Consult TE for the latest dimensions and design specifications. TE connectivity (logo), TE (logo) and TE Connectivity are trademarks of the TE Connectivity Ltd. family of companies. Crompton is a trademark of Crompton Parkinson and is used by TE Connectivity under a licence. Other logos, product and company names mentioned herein may be trademarks of their respective owners

TE Energy – innovative and economical solutions for the electrical power industry: cable accessories, connectors & fittings, insulators & insulation, surge arresters, switching equipment, street lighting, power measurement and control.

Tyco Electronics UK Ltd

TE Energy
 Freebournes Road
 Witham, Essex CM8 3AH
 Phone: +44 (0)870 870 7500
 Fax: +44 (0)870 240 5289
 Email: Crompton.info@te.com
 www.crompton-instruments.com

